

## K327



### ◆ 特点与用途/Features & Applications

- 合金钢/不锈钢材料
- 拉压双向
- 用于试验机, 汽车衡, 料斗秤, 各种工业称重系统等
- 可定制其它量程
- Alloy steel / stainless steel
- Tension and compression application
- Mainly used for testing machine , truck scales, hopper scale and industrial measuring system
- Customize other capacity

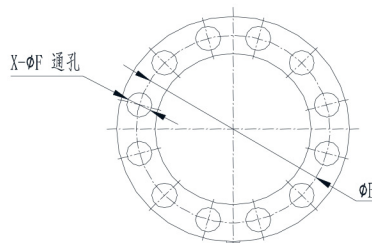
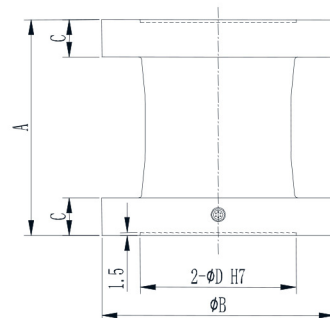
### ◆ 参数

### Specifications

### 技术指标/Technique

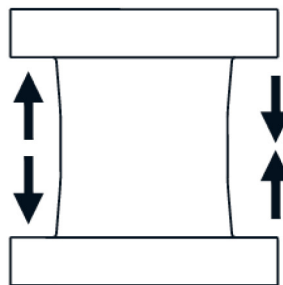
额定容量	Capacity	10,20,30,50,60,100,200 300,400,500,600,800t
输出灵敏度	Sensitivity	1.5 ± 1% mV/V
零点输出	Zero balance	± 1% F.S.
非线性	Non-linearity	0.1% F.S.
滞后	Hysteresis	0.1% F.S.
重复性	Repeatability	0.1% F.S.
蠕变 (30min)	Creep(30min)	0.05% F.S.
温度灵敏度漂移	Temp.effect on output	0.05% F.S./10°C
零点温度漂移	Temp.effect on zero	0.05% F.S./10°C
输入电阻	Input impedance	780 ± 20 Ω
输出电阻	Output impedance	700 ± 10 Ω
绝缘电阻	Insulation	≥ 5000M Ω /100VDC
激励电压	Recommended excitation	5-15V
最大激励电压	Maximum excitation Voltage	20V
温度补偿范围	Compensated temp range	-10-40°C
工作温度范围	Operating temperature range	-10-70°C
安全载荷	Safe load limit	150% F.S.
破坏负载	Breaking load	200% F.S.
电缆线尺寸	Cable size	φ 5 × 6000mm
防护等级	IP Class	IP66

### ◆ 安装尺寸/Mounting Dimension

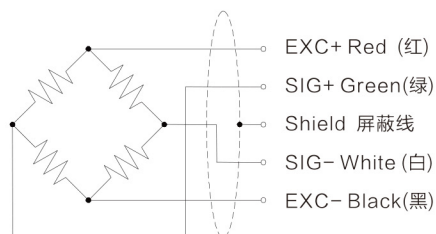


Cap (t)	A	B	C	D	E	X-Ø F
10,20,30	112	130	22	91	112	12-Ø11
50,60	160	197	25	128	160	12-Ø22
100	230	240	40	161	200	12-Ø26
200,300	326	305	57.5	192	250	12-Ø33
400,500	358	415	69	301	360	18-Ø33
600,800	580	570	130	385	512	20-Ø39

### ◆ 受力方式/Load Direction



### ◆ 配线图/Wiring Code



新产品

压向传感器

拉压向传感器

压电力传感器

多维力传感器

称重传感器

扭矩传感器

其他定制力传感器

称重模块

仪表模块放大器