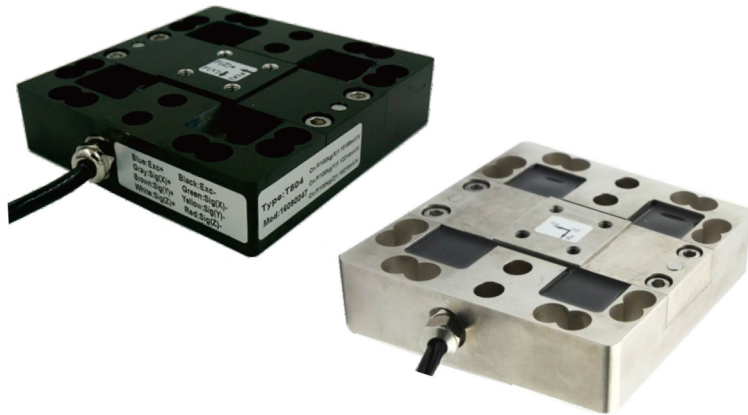
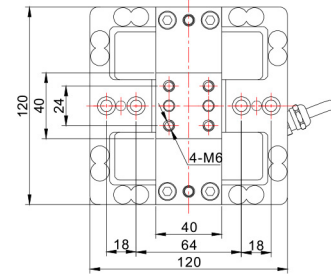
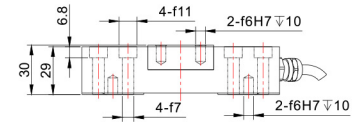


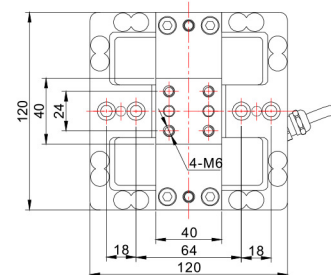
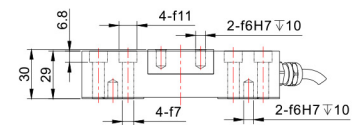
K504



◆ 安装尺寸/Mounting Dimension



T504



T505

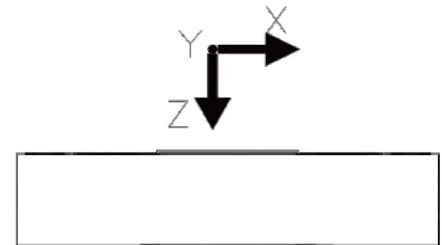
◆ 特点与用途/Features & Applications

- 精度高、抗偏载能力强
- 容易安装, IP66
- 接受定制规格
- 机器人手臂精密控制、曲面研磨抛光, 加工中心精雕加工、医疗设备精密测试
- High accuracy with strong ability of anti-side force
- Easy to install, IP66 protection
- Dimension is customizable
- Precision control of mechanical arm, grinding and polishing for Spherical, carved processing of machining center, precision testing of medical equipment,

◆ 参数 Specifications 技术指标/Technique

参数	Specifications	技术指标/Technique
额定容量	Capacity (N)	X: 50/100/200/500/1000/2000/5000 Y: 50/100/200/500/1000/2000/5000 Z: 50/100/200/500/1000/2000/5000 (大量程可定制)
输出灵敏度	Sensitivity	≈ 1.0mV/V
零点输出	Zero balance	± 2%F.S.
非线性	Non-linearity	0.1%F.S.
滞后	Hysteresis	0.1%F.S.
重复性	Repeatability	0.1%F.S.
互扰误差	Interference error	0.3%F.S.
蠕变 (30min)	Creep(30min)	0.1%F.S.
温度灵敏度漂移	Temp.effect on output	0.1%F.S./10°C
零点温度漂移	Temp.effect on zero	0.1%F.S./10°C
输入电阻	Input impedance	785 ± 20 Ω
输出电阻	Output impedance	700 ± 10 Ω
绝缘电阻	Insulation	≥ 5000M Ω/100VDC
激励电压	Recommended excitation	5~12V
最大激励电压	Maximum excitation Voltage	15V
温度补偿范围	Compensated temp range	-10~40°C
工作温度范围	Operating temperature range	-20~75°C
安全载荷	Safe load limit	150%F.S.
破坏负载	Breaking load	300%F.S.
电缆线尺寸	Cable size	φ 5 × 4000mm
单件重量	Weight approx.	0.8kg
防护等级	IP Class	IP66

◆ 受力方式/Load Direction



◆ 配线图/Wiring Code

X向	Y向	Z向
EXC+Bluc(蓝)	EXC+Ycllow(黄)	EXC+Purplc(紫)
EXC-Brown (棕)	EXC-Pink(粉)	EXC-Red(红)
SIG+White(白)	SIG+Black(黑)	SIG+Orange(橙)
SIG-Green(绿)	SIG-Grey(灰)	SIG-Azure(天蓝)

新产品

压向传感器

拉压向传感器

压电力传感器

多维力传感器

称重传感器

张力传感器

螺纹力

扭矩传感器

其它定制力传感器

称重模块

仪表模块放大器